



BONNET GRANDE CUISINE

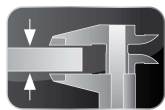
Registered office:

Rue des Frères Lumière - Z.I Mitry Compans

F-77292 MITRY MORY Cedex

ADVANCIA, Electric cooking top, NEUTRAL TOP

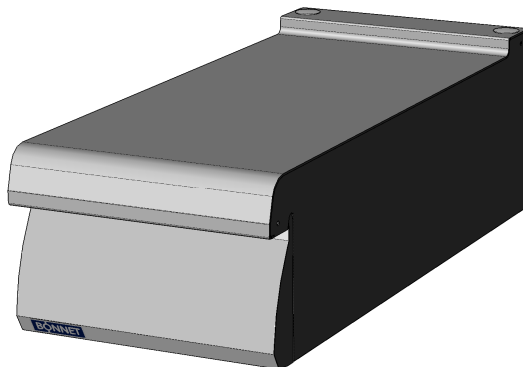
NEUTRAL TOP B1A9DN4D



3 mm Top



FlushTop



ADVANCIA ASSETS

3mmTop : One piece 3mm thick stainless steel structure.

FlushTop : Module can be butt jointed.

GENERAL

- * All stainless steel construction designed to avoid any infiltration.
- * Unfailing sturdy equipment for direct wall fixation.

NEUTRAL TOP

- * Neutral one-piece.

OPTION

- * One-piece wall or central top.

ACCESSORIES

- * See technical data : General features.

STANDARDS : Compliance with standards

IP 25 and IK 9: Protection indexes.

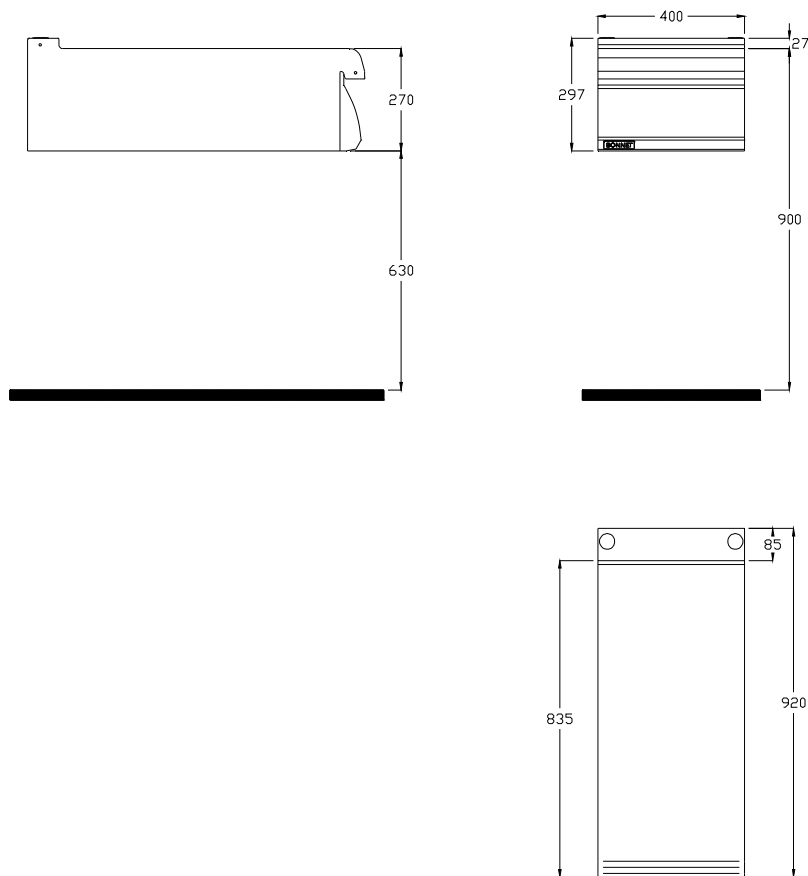
XP U 60-010: Hygiene.



**BONNET GRANDE CUISINE****Registered office:**

Rue des Frères Lumière - Z.I Mitry Compans

F-77292 MITRY MORY Cedex

B1A9DN4D**DIMENSIONS (mm)**

Width	400
Depth	920
Height	297

PACKAGING (mm)

Width	540
Depth	1060
Height	700

WEIGHT (KG)

25