



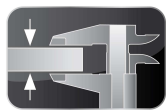
**BONNET GRANDE CUISINE**

**Registered office:**

Rue des Frères Lumière - Z.I Mitry Compans

F-77292 MITRY MORY Cedex

## **ADVANCIA STAR, Gas cooking unit, 2 OPEN BURNERS on open cupboard**



**3 mm Top**



**EasyCleaningSystem**



**CloseContact**

### **2 OPEN BURNERS B1A9FVx4PG**



### **ADVANCIA STAR ASSETS**

**3mmTop** : One piece 3mm thick stainless steel structure.

**EasyCleaningSystem** : Operates with a water bath.

**CloseContact** : Burner with horizontal flame.

### **GENERAL**

- \* All stainless steel construction designed to avoid any infiltration.
- \* Unfailing sturdy equipment for direct wall fixation.
- \* Controls grouped together and recessed protecting them for impact and spillages.
- \* Appliance delivered with 200mm fixed stand with 4 adjustable feet.

### **OPEN BURNERS**

- \* Each module of 2 burners is fitted with:
  - 85mm diameter brass burner pot and head.
  - 1 nicked steel wire grid.
  - A stainless waterbath to recover any spillages and avoid them burning on.
- \* Controlled by gas valve.
- \* Safety thermocouple as standard.

### **OPEN CUPBOARD**

- \* Cupboard suitable for GN 1/1 cookware, stainless base with raised edges to prevent drips (400mm wide).

### **OPTION**

- \* Pilot and electric ignition with push button on the fascia.

### **ACCESSORIES**

- \* See technical data : General features.

### **STANDARDS : Compliance with standards**

**EN 203-1**: European standard relating to the safety of gas appliances.

**EN 203-2-1**: European standard relating to the safety of gas appliances.


**EN 60335-2-36 and EN 60335- 2-49**: European standards relating to the safety of electric appliances. (French standards: Classification index C 73-836 and C 73-849).


**IP 25 et IK 9**: Protection indexes.

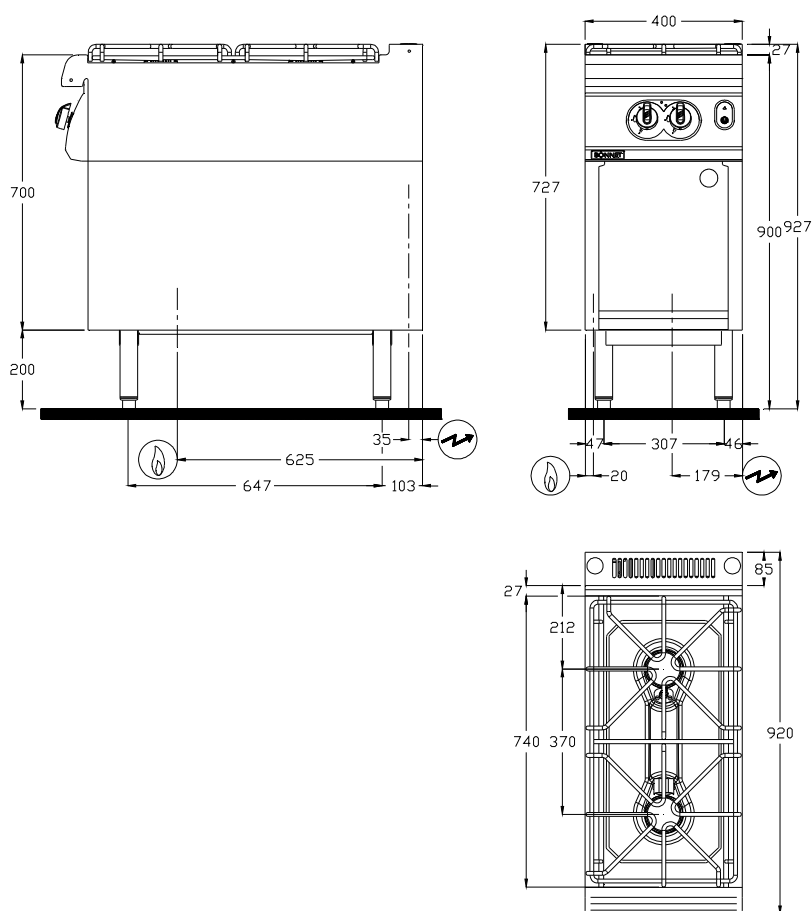
**XP U 60-010**: Hygiene.



### B1A9FVx4PG

 **GAS connection**  
Gas inlet at 180mm from the floor  
As standard, the appliances are supplied for G 20/20 mbar (and G 25/25 mbar) or another gas on request

 **ELECTRICAL connection**  
Electric inlet at 615mm from the floor  
(Flexible cable 1.5 m in length)



#### DIMENSIONS (mm)

Width	400
Depth x Height	920 x 927
Open burner grid	400 x 740

#### PACKAGING (mm)

Width x Depth x Height	540 x 1060 x 1150
------------------------	-------------------

#### WEIGHT (KG)

70

#### COMPOSITION OF TOP

Front burner 8.8 kW	1
Rear burner 5.6 kW	1

#### COMPOSITION OF THE BOTTOM PART

Width of cupboard	400
-------------------	-----

#### GAS

Connection Thread 15/21 mm (1/2")

**Power (kW)** **14.4**

G31 Propane  $37^{\pm 4}/50^{\pm 5}$  mbar (kg/h) 1.12

G30 Butane  $50^{\pm 5}$  mbar (kg/h) 1.14

G20 Natural gas  $20^{\pm 2}$  mbar (m<sup>3</sup>/h) 1.52

G25 Natural gas  $20^{\pm 2}$  mbar (m<sup>3</sup>/h) 1.73

G25 Natural gas  $25^{\pm 3}$  mbar (m<sup>3</sup>/h) 1.73

**Power (kW)** **11.2**

G30 Butane  $28^{\pm 3}/30^{\pm 3}$  mbar (kg/h) 0.88

#### **ELECTRICITY (kW) (Single-phase 230V)**

Option electrical ignition 0.1

Accessory cupboard heating kit 1