

ADVANCIA PLUS, Gas cooking top, MIXED (smooth & ribbed) PLANCHA

MIXED (smooth & ribbed) PLANCHA B1A9PM+6DG



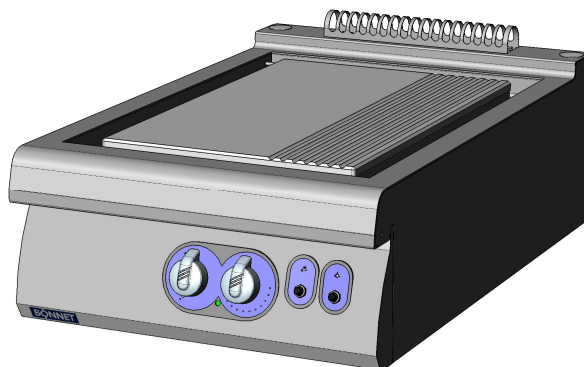
3 mm Top



FlushTop



CleaningSystemPlus



Start&Cook



FullPowerSystem

ADVANCIA PLUS ASSETS

3mmTop : One piece 3mm thick stainless steel structure.

FlushTop : Module can be butt jointed.

CleaningSystemPlus : Plate that is flush with the worktop fitted over a channel with continuous water flow floating the grease away.

Start&Cook : Electric spark ignition with pilot and thermocouple.

FullPowerSystem : High output micro perforated burner with integral regulation.

GENERAL

- * All stainless steel construction designed to avoid any infiltration.
- * Unfailing sturdy equipment for direct wall fixation.
- * Controls grouped together and recessed protecting them for impact and spillages.

PLANCHA

- * Fitted with a 15mm thick mixed (1/3 ribbed to the right) Martin steel plate, providing a surface area of 27 dm², finish vibrated.
- * Stainless combustion chamber.
- * Heated by micro perforated 2 burners ensuring even temperature and continuous production.
- * Controlled by gas valves with a thermostat of 50 to 300°C.
- * Electric ignition via push button on the fascia.
- * Delivered with a shaped spatula for cleaning the ribbed section.

OPTION

- * One-piece wall or central top.

ACCESSORIES

- * See technical data : General features.

STANDARDS : Compliance with standards

EN 203-1: European standard relating to the safety of gas appliances.





EN 203-2-9: European standard relating to the safety of gas appliances.

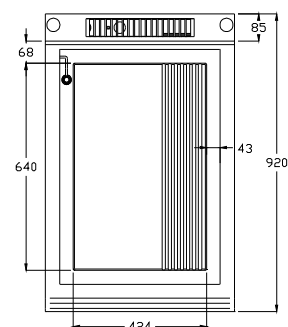
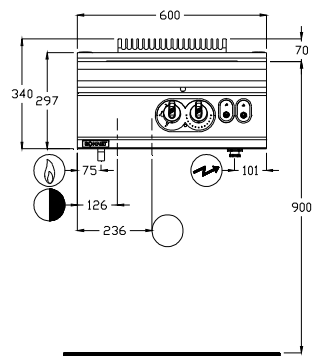
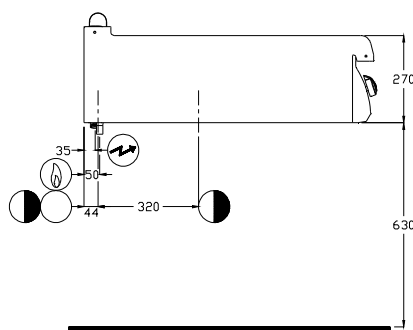
EN 60335-2-36: European standards relating to the safety of electric appliances.
(French standards: Classification index C 73-836).

IP 25 et IK 9: Protection indexes.

XP U 60-010: Hygiene.

B1A9PM+6DG

-  **GAS connection**
Gas inlet at 590mm from the floor
As standard, the appliances are supplied for G 20/20 mbar (and G 25/25 mbar) or another gas on request
-  **ELECTRICAL connection**
Electric inlet at 615mm from the floor
(Flexible cable 1.5 m in length)
-  **POTABLE COLD WATER**
Water inlet at 600mm from the floor
-  **DRAIN**
Drain outlet at 535mm from the floor
Delivered with drain set up at the back of the equipment, possibility to set up the drain outlet pipe at the front


DIMENSIONS (mm)

| | |
|-----------------------------------|-----------|
| Width | 600 |
| Depth x Height | 920 x 340 |
| Plate | 424 x 640 |
| Useful surface (dm ²) | 27 |

PACKAGING (mm)

| | |
|------------------------|------------------|
| Width x Depth x Height | 740 x 1060 x 700 |
|------------------------|------------------|

WEIGHT (KG)

65

COMPOSITION OF TOP

| | |
|-----------------|---|
| Plate width 424 | 1 |
|-----------------|---|


GAS

Connection Thread 15/21 mm (1/2")

Power (kW) **8.3**

G31 Propane 37^{±4}/50^{±5} mbar (kg/h) 0.65

G30 Butane 28^{±3}/50^{±5} mbar (kg/h) 0.65

G20 Natural gas 20^{±2} mbar (m³/h) 0.88

G25 Natural gas 20^{±2} mbar (m³/h) 1.00

G25 Natural gas 25^{±3} mbar (m³/h) 1.00

ELECTRICITY (kW) (Single-phase 230V)

Voltage 230Va.c.

Power (kW) 0.1


POTABLE COLD WATER

Pressure (Min / Max) 150/600 kPa (1.5 bars / 6 bars)

Max temperature 30°C

Nature Filtered to 50 microns

Connection Flexible Ø 20/27 female (3/4")


DRAIN

Connection Smooth stainless steel tube Ø 25 + silicon tube