



BONNET GRANDE CUISINE

Registered office:

Rue des Frères Lumière - Z.I Mitry Compans

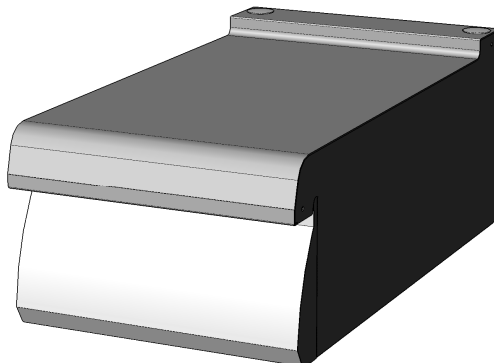
F-77292 MITRY MORY Cedex

OPTIMUM, Electric cooking top, NEUTRAL TOP



FlushTop

NEUTRAL TOP
B1O7DN4D



OPTIMUM ASSETS

FlushTop : Module can be butt jointed.

GENERAL

- * Upper structure totally stainless (top 2mm thick and inset side faces in 1.5mm laser welded)
- * All stainless steel construction designed to avoid any infiltration.
- * Unfailing sturdy equipment for direct wall fixation.

NEUTRAL TOP

- * Neutral one-piece.

OPTION

- * One-piece wall or central top.

ACCESSORIES

- * See technical data : General features.

STANDARDS : Compliance with standards

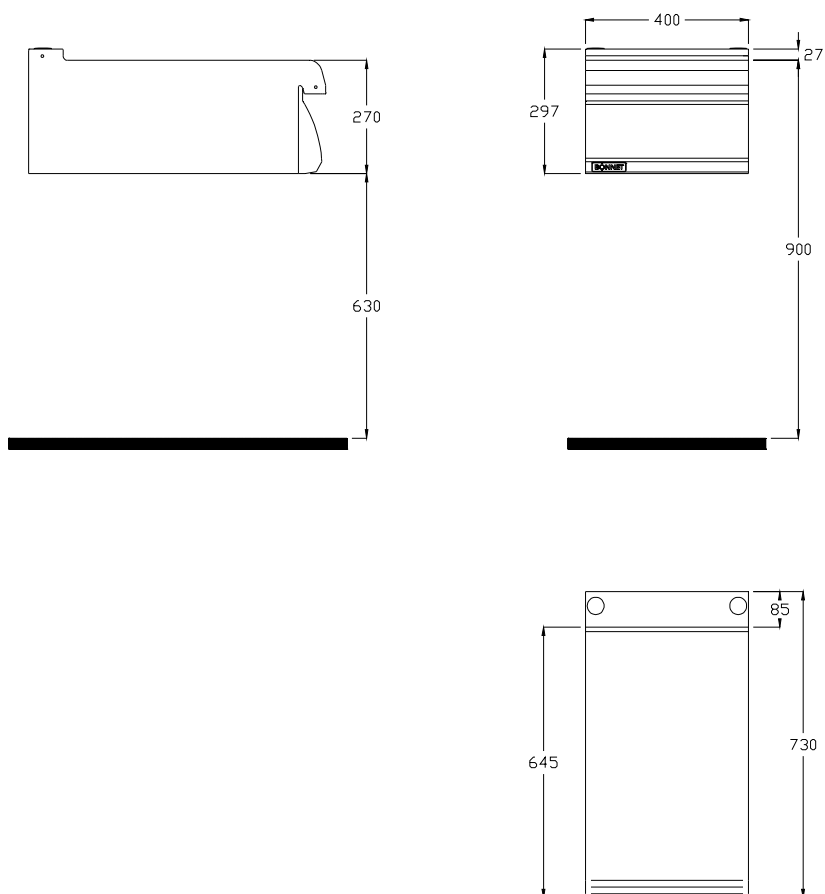
IP 25 and IK 9: Protection indexes.

XP U 60-010: Hygiene.



**BONNET GRANDE CUISINE****Registered office:**

Rue des Frères Lumière - Z.I Mitry Compans
F-77292 MITRY MORY Cedex

B1O7DN4D**DIMENSIONS (mm)**

Width	400
Depth	730
Height	297

PACKAGING (mm)

Width	540
Depth	1060
Height	700

WEIGHT (KG)

20