



BONNET GRANDE CUISINE

Registered office:

Rue des Frères Lumière - Z.I Mitry Compans

F-77292 MITRY MORY Cedex

OPTIMUM, Gas cooking top, SOLID TOP

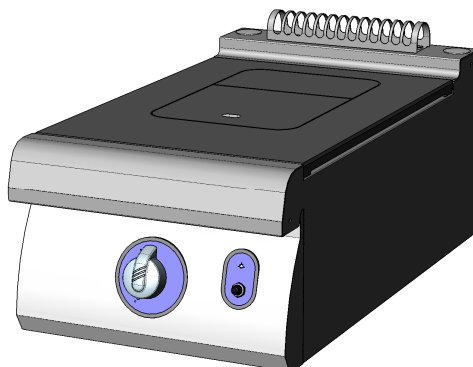
SOLID TOP
B107PG4DG



EasyCleaningSystem



Start&Cook



OPTIMUM ASSETS

Start&Cook : Electric spark ignition with pilot and thermocouple.

EasyCleaningSystem : Plate is flush with the worktop.

GENERAL

- * Upper structure totally stainless (top 2mm thick and inset side faces in 1.5mm laser welded)
- * All stainless steel construction designed to avoid any infiltration.
- * Unfailing sturdy equipment for direct wall fixation.
- * Controls grouped together and recessed protecting them for impact and spillages.

SOLID TOP

- * Cast iron plate average thickness 10mm, size: 550 x 400 with two removable bulls eyes.
- * Stainless insulated combustion chamber forming a recovery container.
- * Heated by circular brass burner ensuring a rapid rise in the temperature of the bulls eyes.
- * Controlled by gas valve.

OPTION

- * One-piece wall or central top.

ACCESSORIES

- * See technical data : General features.

STANDARDS : Compliance with standards

EN 203-1: European standard relating to the safety of gas appliances.

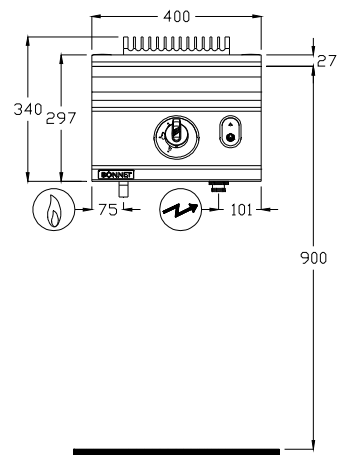
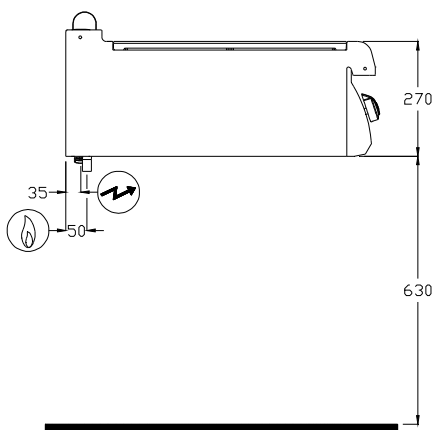
EN 203-2-9: European standard relating to the safety of gas appliances.

EN 60335-2-36: European standards relating to the safety of electric appliances.
(French standards: Classification index C 73-836).

IP 25 et IK 9: Protection indexes.

XP U 60-010: Hygiene.

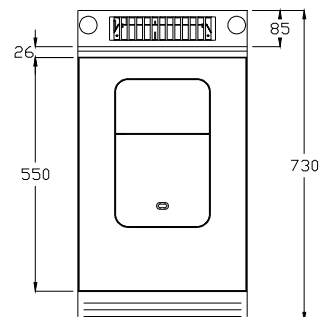


B107PG4DG

GAS connection

Gas inlet at 590mm from the floor
As standard, the appliances are supplied for G 20/20 mbar (and G 25/25 mbar) or another gas on request

ELECTRICAL connection

Electric inlet at 615mm from the floor
(Flexible cable 1.5 m in length)


DIMENSIONS (mm)

Width	400
Depth x Height	730 x 340
Solid plate	400 x 550

PACKAGING (mm)

Width	540
Depth x Height	1060 x 700

WEIGHT (KG)

50

COMPOSITION OF TOP

Solid plate 6.5 kW	1
--------------------	---

GAS

Connection Thread 15/21 mm (1/2")

Power (kW) **6.5**

G31 Propane $37^{+4}/50^{+5}$ mbar (kg/h) 0.51

G30 Butane 50^{+3} mbar (kg/h) 0.51

G20 Natural gas 20^{+2} mbar (m³/h) 0.69

G25 Natural gas $20^{+2}/25^{+3}$ mbar (m³/h) 0.78

Power (kW) **5.1**

G31 Propane $28^{+3}/30^{+3}$ mbar (kg/h) 0.40

ELECTRICITY (Single-phase 230V)

Voltage 230Va.c.

Power (kW) 0.1