

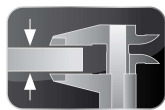


BONNET GRANDE CUISINE

Registered office:

Rue des Frères Lumière - Z.I Mitry Compans
F-77292 MITRY MORY Cedex

ADVANCIA, Gas cooking top, CAST IRON GRIDDLE



3 mm Top



FlushTop

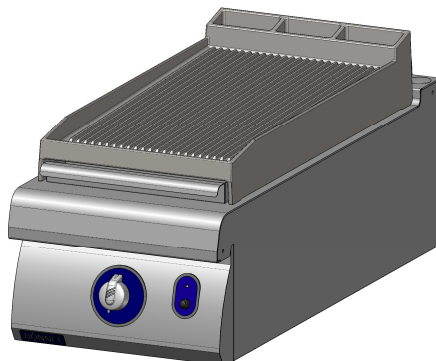


Start&Cook

CAST IRON GRIDDLE B2A9GF4DG



EasyCleaningSystem



ADVANCIA ASSETS

3mmTop : One piece 3mm thick stainless steel structure.

FlushTop : Module can be butt jointed.

EasyCleaningSystem : Cooking juices recovered via a removable container in the fascia.

Start&Cook : Electric spark ignition with pilot and thermocouple.

GENERAL

- * All stainless steel construction designed to avoid any infiltration.
- * Unfailing sturdy equipment for direct wall fixation.
- * Controls grouped together and recessed protecting them for impact and spillages.

CAST IRON GRIDDLE

- * Cast iron plate, sloped and ribbed, with an average thickness of 8 mm.
- * Heated by 2 micro perforated burners ensuring even temperature and continuous production.
- * Controlled by gas valve.
- * A channel for collecting the cooking juice at the front of the plate.

OPTION

- * One-piece wall or central top.

ACCESSORIES

- * See technical data : General features.

STANDARDS : Compliance with standards

EN 203-1: European standard relating to the safety of gas appliances.

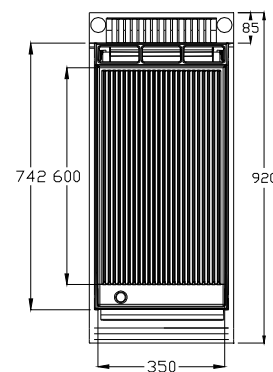
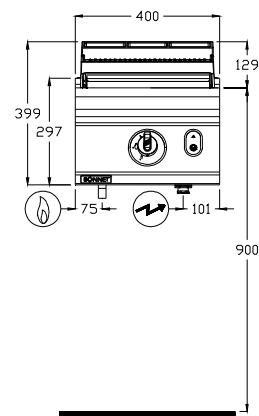
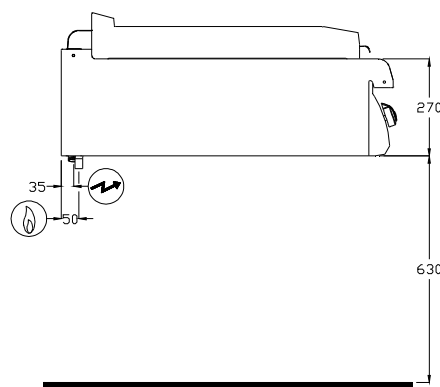
EN 203-2-9: European standard relating to the safety of gas appliances.

EN 60335-2-36: European standards relating to the safety of electric appliances.
(French standards: Classification index C 73-836).

IP 25 et IK 9: Protection indexes.

XP U 60-010: Hygiene.



B2A9GF4DG

GAS connection

Gas inlet at 590mm from the floor

As standard, the appliances are supplied for G 20/20 mbar (and G 25/25 mbar) or another gas on request

ELECTRICAL connection

Electric inlet at 615mm from the floor

(Flexible cable 1.5 m in length)

DIMENSIONS (mm)

Width	400
Depth x Height	920 x 399
Cast iron Plate	670 x 350
Useful surface (dm ²)	21

PACKAGING (mm)

Width	540
Depth x Height	1060 x 700

WEIGHT (KG)

80

COMPOSITION OF TOP

Cast iron plate	1
-----------------	---

GAS

Connection Thread 15/21 mm (1/2")

Power (kW) **8.3**

G31 Propane $37^{+4}/50^{+5}$ mbar (kg/h) 0.65

G30 Butane $28^{+3}/50^{+5}$ mbar (kg/h) 0.65

G20 Natural gas 20^{+2} mbar (m³/h) 0.88

G25 Natural gas 20^{+2} mbar (m³/h) 1.02

G25 Natural gas 25^{+3} mbar (m³/h) 1.02

ELECTRICITY (kW) (Single-phase 230V)

Voltage 230Va.c.

Power (kW) 0.1