



BONNET GRANDE CUISINE

Registered office:

Rue des Frères Lumière - Z.I Mitry Compans

F-77292 MITRY MORY Cedex

ADVANCIA, Gas BRATT PAN 50 dm² / 100 litres (manual tilt)

BRATT PAN 50 dm² / 100 litres B3A9SA50MBG



3 mm Top



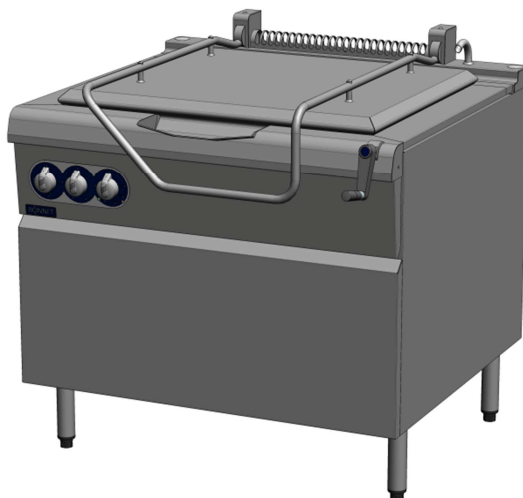
FlushTop



Start&Cook



CoreControl



ADVANCIA ASSETS

3mmTop: One piece 3mm thick stainless steel structure.

FlushTop: Module can be butt jointed.

Start&Cook: Automatic electric spark ignition with pilot and ionisation flame control.

CoreControl: Power adapts with well base regulation.

GENERAL

- * All stainless steel construction designed to avoid any infiltration.
- * Extremely robust it can be bolted directly to a wall.
- * Controls grouped together and recessed protecting them for impact and spillages.
- * Appliance delivered with 200mm fixed stand with 4 adjustable feet.

BRATT PAN

- * This appliance has a full width tilting well.
- * Its base, with a useful surface of 510cm² is made of very thick stainless steel plate so as to ensure a uniform surface temperature.
- * The large format spout allows for quick and clean draining (no dripping on the front panel) guaranteeing a constant impact point over the floor gulley.
- * The hot and cold water supply is via a solenoid valve controlled by a 4-position switch to a chrome spout.
- * The cover is counter-balanced by a system built into the collector with adjustment for tension and opening angle.
- * Heating is regulated by a thermostat (for back temperature) + an energy regulator simmerstat (for the power) to drive a gas solenoid.
- * Temperature distribution is ensured by a micro perforated fixed burner with 10 flame ranges.

MANUAL TILT

- * The smooth and progressive tilting of the well is achieved using a crank with a folding handle built into the well profile.
- * This patented device ensures complete safety of operation. (The handle moves with the well and remains at an ergonomic height).

OPTION

- * Double skinned lid.

ACCESSORIES

- * See technical data : General features.

STANDARDS: Complies with

EN 203-1: European standard relating to the safety of gas appliances.

EN 203-2-8: European standard relating to the safety of gas appliances.

EN 60335-2-39: European standards relating to the safety of electric appliances.
(French standards: Classification index C 73-839).

IP 25 et IK 9: Protection indexes.

XP U 60-010: Hygiene.



B3A9SA50MBG

GAS connection

Gas inlet at 180mm from the floor
As standard, the appliances are supplied for G 20/20 mbar (and G 25/25 mbar) or another gas on request


ELECTRICAL connection

Electric inlet at 190mm from the floor
(Flexible cable 1.5 m in length)


POTABLE HOT WATER

Water inlet at 200mm from the floor


POTABLE COLD WATER

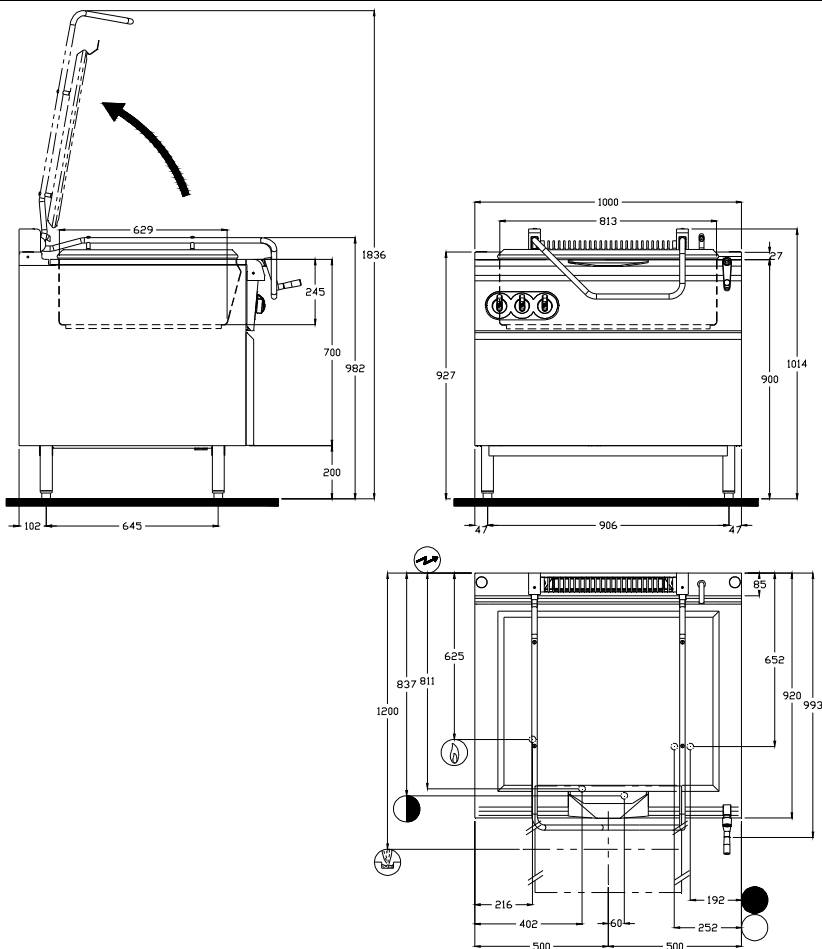
Water inlet at 200mm from the floor


GULLEY

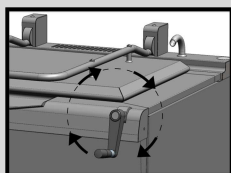
Minimum dimensions 550 x 800 mm


DRAIN water supply pipe purging

Drain outlet at 200mm from the floor



The operation of the tilt handle requires a space of 170mm to the right hand side of the unit. This amount of clearance is required for correct ergonomic operation. Consequently a **manual tilt** bratt pan should be located at least 170mm from a wall.


DIMENSIONS (mm)

Width x Depth x Height

1000 x 993 x 1014

Tank (Depth x Width x Depth)

245 x 813 x 629

Useful surface

51 dm²

Nominal capacity

100 litres

PACKAGING (mm)

Width x Depth x Height

1340 x 1130 x 1150

WEIGHT (KG)

200


GAS

Connection : Thread 15/21 mm (1/2")

Power (kW)

25

G31 Propane 37^{±4}/50^{±5} mbar (kg/h)

1.94

G30 Butane 50^{±5} mbar (kg/h)

1.97

G20 Natural Gas 20^{±2} mbar (m³/h)

2.65

G25 Natural Gas 20^{±2}/25^{±3} mbar (m³/h)

3.01

Power (kW)

20

G30 Butane 28^{±3}/30^{±3} mbar (kg/h)

1.58


ELECTRICITY (kW)

Voltage

Single-phase 230 V

Power

0.1


POTABLE COLD WATER

Pressure (Min / Max)

Connection : 20/27 Ø (3/4")

150/600 kPa (1.5 bar / 6 bar)

Max temperature

30°C

Nature

Filtered to 50 microns


POTABLE HOT WATER

Pressure (Min / Max)

Connection : 20/27 Ø (3/4")

150/600 kPa (1.5 bar / 6 bar)

Max temperature

60°C

Nature

Filtered to 50 microns