

### High Temp GN2/1

1 door model flat liner – Ext.and Int.S/S or Ext.Colaminate and Int.Alu



Devices codes :

Ext. et Int. S/S : 611862 (integral) & 611862S (remote)

Ext. Colaminate/Int. Alu. : 611871 (integral) & 611871S (remote)

- \* The **high temp** (0° à +12°C) refrigerated cabinet is designed to stock foodstuffs for an ambient temperature of 43°C. It works with R290 fluid.
- \* Capacity of **600 liters**. Delivered with 4 S/S shelves GN2/1 (530×650). The cabinet can fitted 24 shelves, step 55mm.
- \* Monoshell construction and external evaporator with 100% access of the inner for good cleaning.
- \* Regulation by electronic display. Automatic desfrost and vaporized defrost water by hot gas.
- \* High and low temperature alarm, sound and visual.
- \* Intervention on the technical parts without having to empty the cabinet and the door closed
- \* Inner with radius angles and S/S 304 or Aluminium
- \* S/S or Colaminate external 3 faces. Anti corrosion galvanised back, top and bottom. S/S legs
- \* Door fitted with lock. Spring loaded hinges for automatic door closing with 90° dwell. Fully removable without tools fungicidal magnetic door gasket. Possibility to reverse the door.
- \* Remote version is delivered with R134a expansion valve and vaporized defrost water by electric heater.


#### OPTIONS et ACCESSOIRES

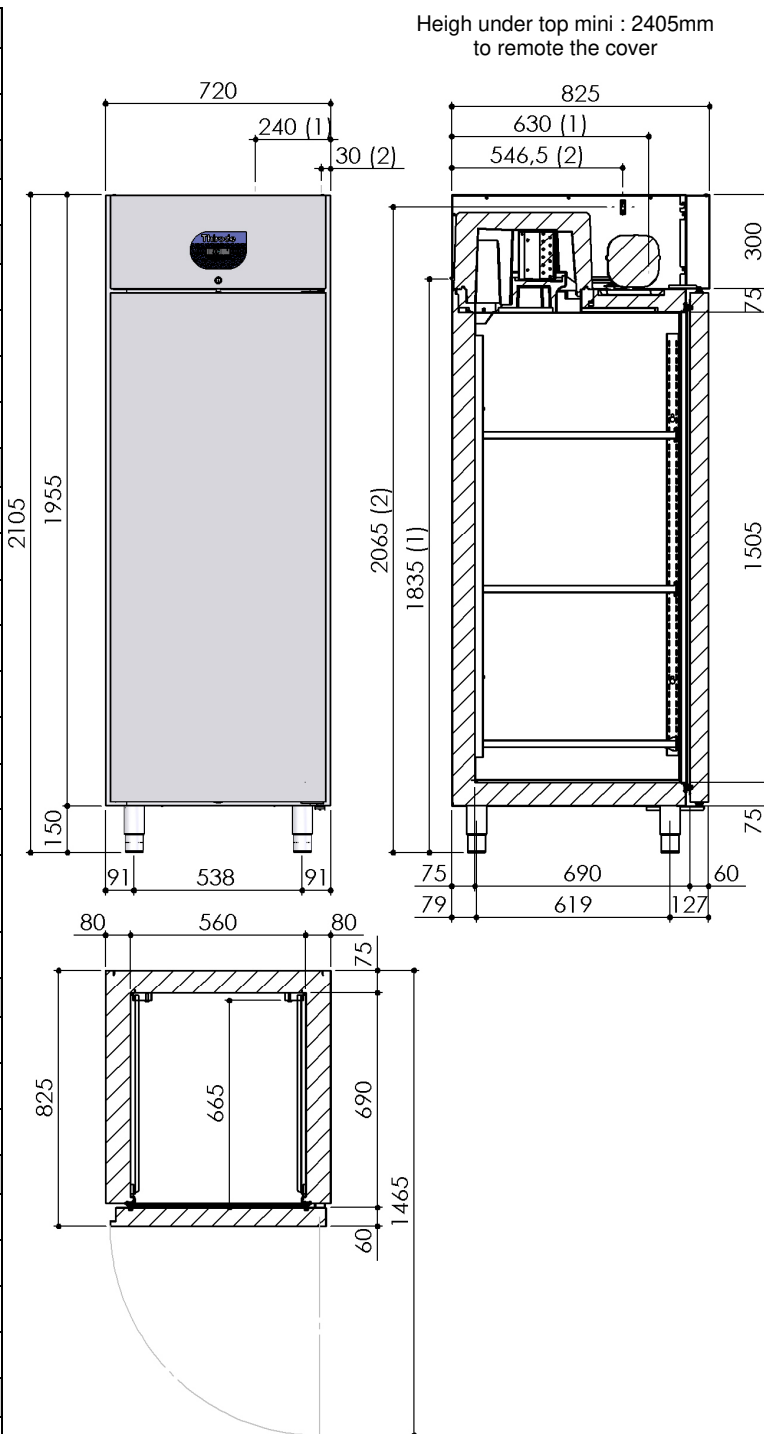
- |                            |                                     |
|----------------------------|-------------------------------------|
| - 4 S/S castors Ø100       | - S/S Back cover (+20mm)            |
| - 4 Galvanised castors Ø80 | - Electric heater for defrost water |
| - Led inner lighting       | - HACCP recorder with USB plug      |
| - Glass door               | - S/S shelves                       |
| - Half door                | - R134a fluid                       |
| - Marine legs              |                                     |
| - 60Hz                     |                                     |

# Refrigerated cabinet

## 1 door GN2/1 model – High temp

### Technical characteristics

Dimensions (mm)		Height	Width	Depth
	External	2105	720	825*
	Inner	1505	560	690
Weigh (Kg)				
	Gross	130		
Electricity				
	Voltage	230V ~		
	Frequency	50 Hz		
	Protection	aM 2A		
	Maximum power	250 W		
Refrigerated system				
	Refrigerating power (W)	343 à -10/+45°C		
	Compressor type	Hermetic		
	Evaporator type	Ventilated		
	Fluid	R290		
	Acoustic pressure	45 dbA		
	Heat release	4320 W/24h		
	Condenser air flow	330m3/h		
	Fluid charge	(see nameplate)		
	Gas expansion	Capillary		
		R : expansion valve R134a		
	Condensation	Air		
Capacities				
	Gross volume (L)	600 L		
	Shelves	3 (GN2/1)		
	Max. level number	24		
Temperatures				
	Max. ambient	+43°C		
	Climate class	5 (40°C / 40% HR)		
	Temperature rang	0/+12°C		
	Energetic class	C / 1.73 KW/24h		
Construction				
	Type	Monoshell		
	External	3 faces S/S 304 or Colam.		
	Inner	S/S 304 or Alu		
	Insulation	Polyurethane th.80/75 mm		
Standard				
		Safety : NF EN 60335-1/2-89		
		Européen : EN 16825		



- (1) Refrigerated system connection
- (2) Electric connection
- : +20mm with back cover option (depth)

This document is not contractual n° 6TE657445-1120 - THIRODE reserves the right to improve or modify its products without notice

**Thirote**

Rue des Frères Lumière - Z.I. Mitry Compans - 77292 MITRY MORY cedex  
Tél.01 64 67 61 00 - Fax.01.64.67.61.01