

Low Temp GN2/1

1 door model flat liner – Ext.and Int.S/S or Ext.Colaminate and Int.Alu



Devices codes :

Ext. et Int. S/S : 611864 (integral) & 611864S (remote)

Ext. Colaminate/Int. Alu. : 611872 (integral) & 611872S (remote)

- * The **low temp** (-18° à -21°C) refrigerated cabinet is designed to stock foodstuffs for an ambient temperature of 43°C. It works with R290 fluid.
- * Capacity of **600 liters**. Delivered with 4 S/S shelves GN2/1 (530×650). The cabinet can fitted 24 shelves, step 55mm.
- * Monoshell construction and external evaporator with 100% access of the inner for good cleaning.
- * Regulation by electronic display. Automatic desfrost and vaporized defrost water by hot gas.
- * High and low temperature alarm, sound and visual.
- * Intervention on the technical parts without having to empty the cabinet and the door closed
- * Inner with radius angles and S/S 304 or Aluminium
- * S/S or Colaminate external 3 faces. Anti corrosion galvanised back, top and bottom. S/S legs
- * Door fitted with lock. Spring loaded hinges for automatic door closing with 90° dwell. Fully removable without tools fungicidal magnetic door gasket. Possibility to reverse the door.
- * Remote version is delivered with R452A expansion valve and vaporized defrost water by electric heater.


OPTIONS et ACCESSOIRES

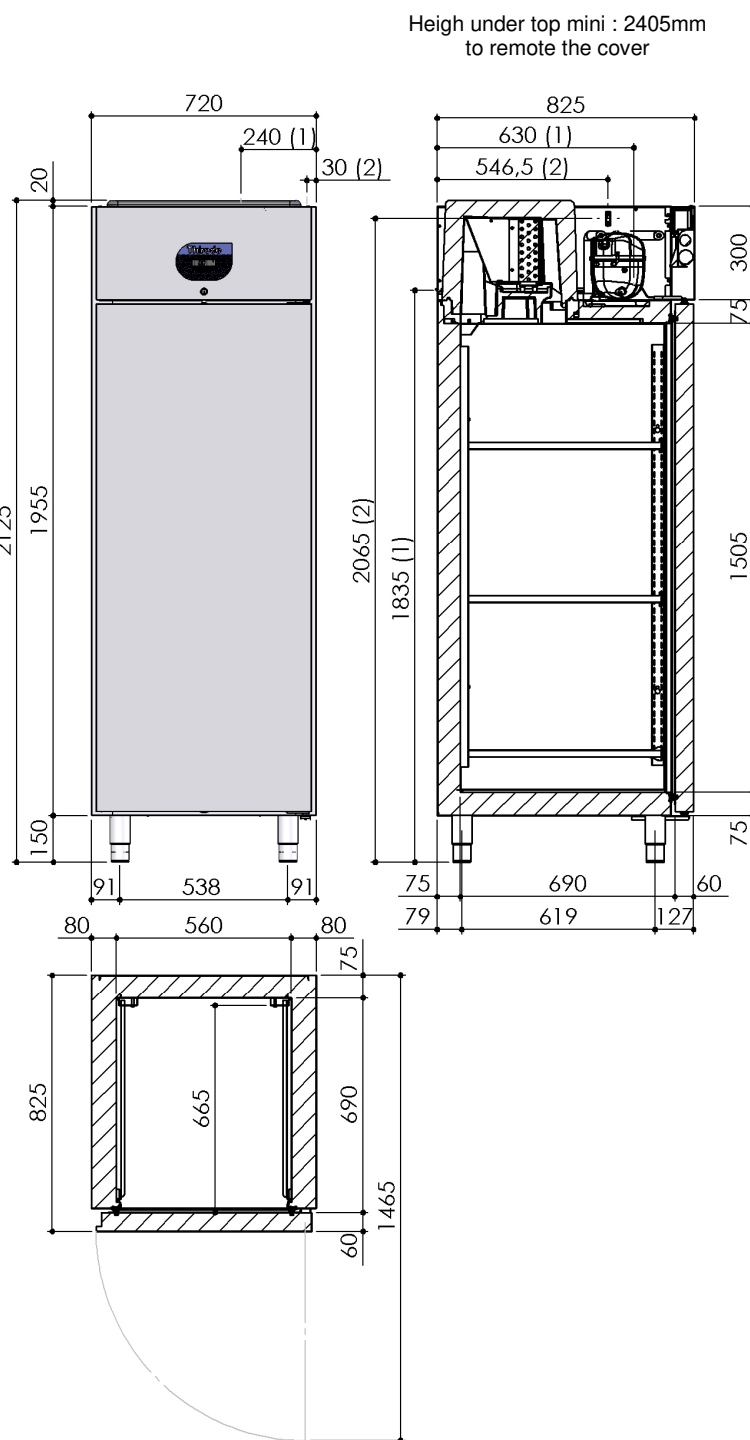
- | | |
|----------------------------|-------------------------------------|
| - 4 S/S castors Ø100 | - S/S Back cover (+20mm) |
| - 4 Galvanised castors Ø80 | - Electric heater for defrost water |
| - Led inner lighting | - HACCP recorder with USB plug |
| - Glass door | - S/S shelves |
| - Half door | - R452A fluid |
| - Marine legs | |
| - 60Hz | |

Refrigerated cabinet

1 door GN2/1 model – Low temp

Technical characteristics

Dimensions (mm)		Height	Width	Depth
	External	2125	720	825*
	Inner	1505	560	690
Weigh (Kg)				
	Gross	130		
Electricity				
	Voltage	230V ~		
	Frequency	50 Hz		
	Protection	aM 4A		
	Maximum power	500 W		
Refrigerated system				
	Refrigerating power (W)	522 à -30/+45°C		
	Compressor type	Hermetic		
	Evaporator type	Ventilated		
	Fluid	R290		
	Acoustic pressure	50 dbA		
	Heat release	13350 W/24h		
	Condenser air flow	330m3/h		
	Fluid charge	(see nameplate)		
	Gas expansion	Capillary R : expansion valve R452A		
	Condensation	Air		
Capacities				
	Gross volume (L)	600		
	Shelves	3 (GN2/1)		
	Max. level number	24		
Temperatures				
	Max. ambient	+43°C		
	Climate class	5 (40°C / 40% HR)		
	Temperature rang	-18/-21°C		
	Energetic class	D / 7.55 KW/24h		
Construction				
	Type	Monoshell		
	External	3 faces S/S 304 or Colam.		
	Inner	S/S 304 or Alu		
	Insulation	Polyurethane th.80/75 mm		
Standard				
		Safety : NF EN 60335-1/2-89		
		Européen : EN 16825		



- (1) Refrigerated system connection
 (2) Electric connection
 • : +20mm with back cover option (depth)

This document is not contractual n° 6TE657446-1120 - THIRODE reserves the right to improve or modify its products without notice

Thirote

Rue des Frères Lumière - Z.I. Mitry Compans - 77292 MITRY MORY cedex
 Tél.01 64 67 61 00 - Fax.01.64.67.61.01