

### High Temp GN2/1

2 doors model pressed liner – Ext. and Int.S/S



Devices codes :

Ext. and Int. S/S : 611865 (integral) & 611865S (remote)

- \* The **high temp** (0° à +12°C) 2 doors refrigerated cabinet is designed to stock foodstuffs for an ambient temperature of 43°C. It works with R290 fluid.
- \* Capacity of **1350 liters**. Delivered with 8 S/S shelves GN2/1 (530x650). The cabinet can fitted 24 shelves per door, step 55mm.
- \* Monoshell construction and external evaporator with 100% access of the inner for good cleaning.
- \* Regulation by electronic display. Automatic desfrost and vaporized defrost water by hot gas.
- \* High and low temperature alarm, sound and visual.
- \* Intervention on the technical parts without having to empty the cabinet and the door closed
- \* Inner with radius angles and S/S 304
- \* S/S external 3 faces. Anti corrosion galvanised back, top and bottom. S/S legs
- \* Door fitted with lock. Spring loaded hinges for automatic door closing with 90° dwell. Fully removable without tools fungicidal magnetic door gasket. Possibility to reverse the door.
- \* Remote version is delivered with R134a expansion valve and vaporized defrost water by electric heater.


#### OPTIONS et ACCESSOIRES

- |                            |                                     |
|----------------------------|-------------------------------------|
| - 4 S/S castors Ø100       | - S/S Back cover (+20mm)            |
| - 4 Galvanised castors Ø80 | - Electric heater for defrost water |
| - Led inner lighting       | - HACCP recorder with USB plug      |
| - Glass door               | - S/S shelves                       |
| - Half door                | - R134a fluid                       |
| - Marine legs              |                                     |
| - 60Hz                     |                                     |

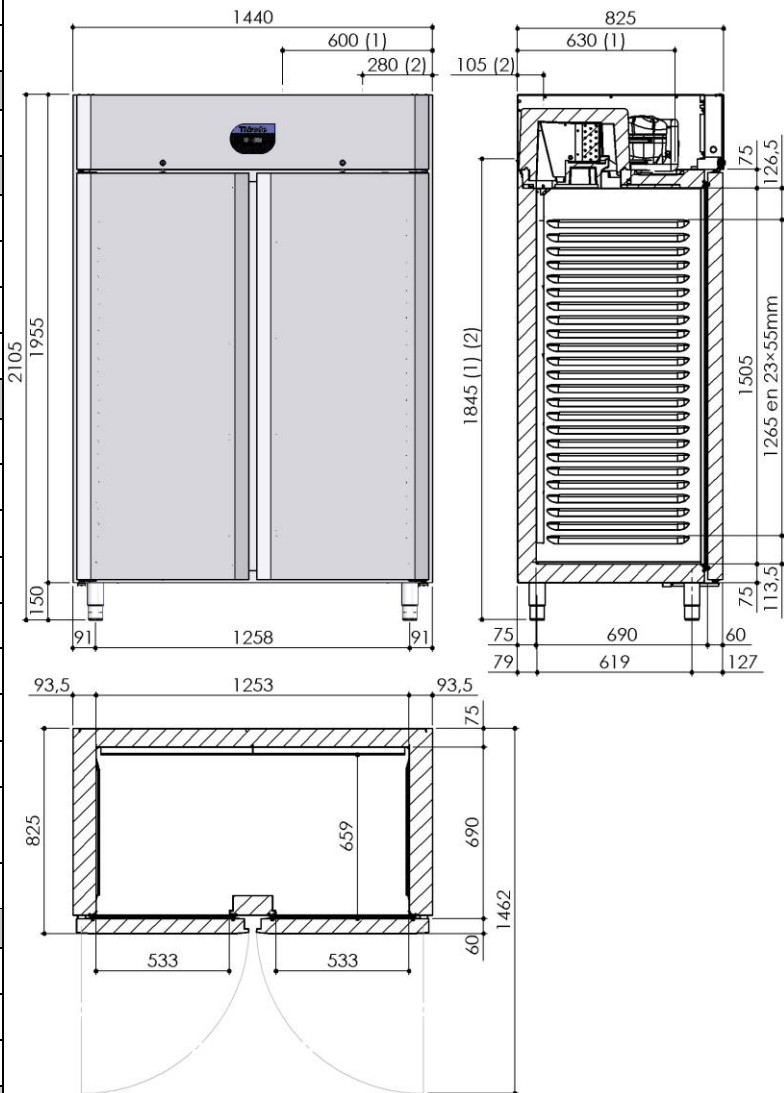
# Refrigerated cabinet

## 2 doors GN2/1 model – High temp

### Technical characteristics

Dimensions (mm)		Height	Width	Depth
	External	2105	1440	825*
	Inner	1505	1253	690
Weight (Kg)				
	Gross		190	
Electricity				
	Voltage		230V ~	
	Frequency		50 Hz	
	Protection		aM 4A	
	Maximum power		500 W	
Refrigerated system				
	Refrigerating power (W)		965 à -10/+45°C	
	Compressor type		Hermetic	
	Evaporator type		Ventilated	
	Fluid		R290	
	Acoustic pressure		48 dbA	
	Heat release		6800 W/24h	
	Condenser air flow		450m3/h	
	Fluid charge		(see nameplate)	
	Gas expansion		Capillary	
			R : expansion valve R134a	
	Condensation		Air	
Capacities				
	Gross volume (L)		1350	
	Shelves		8 (GN2/1)	
	Max. level number		48	
Temperatures				
	Max. ambient		+43°C	
	Climate class		5 (40°C / 40% HR)	
	Temperature range		0/+12°C	
	Energetic class		C / 3.56 KW/24h	
Construction				
	Type		Monoshell	
	External		3 faces S/S 304	
	Inner		S/S 304	
	Insulation		Polyurethane, th.93.5/75 mm	
Standard				
		Safety : NF EN 60335-1/2-89		
		Européen : EN 16825		

Height under top mini : 2405mm  
to remove the cover



- (1) Refrigerated system connection
- (2) Electric connection
- : +20mm with back cover option (depth)

This document is not contractual n° 6TE657443-0721 - THIRODE reserves the right to improve or modify its products without notice

**Thirote**

Rue des Frères Lumière - Z.I. Mitry Compans - 77292 MITRY MORY cedex  
Tél.01 64 67 61 00 - Fax.01.64.67.61.01