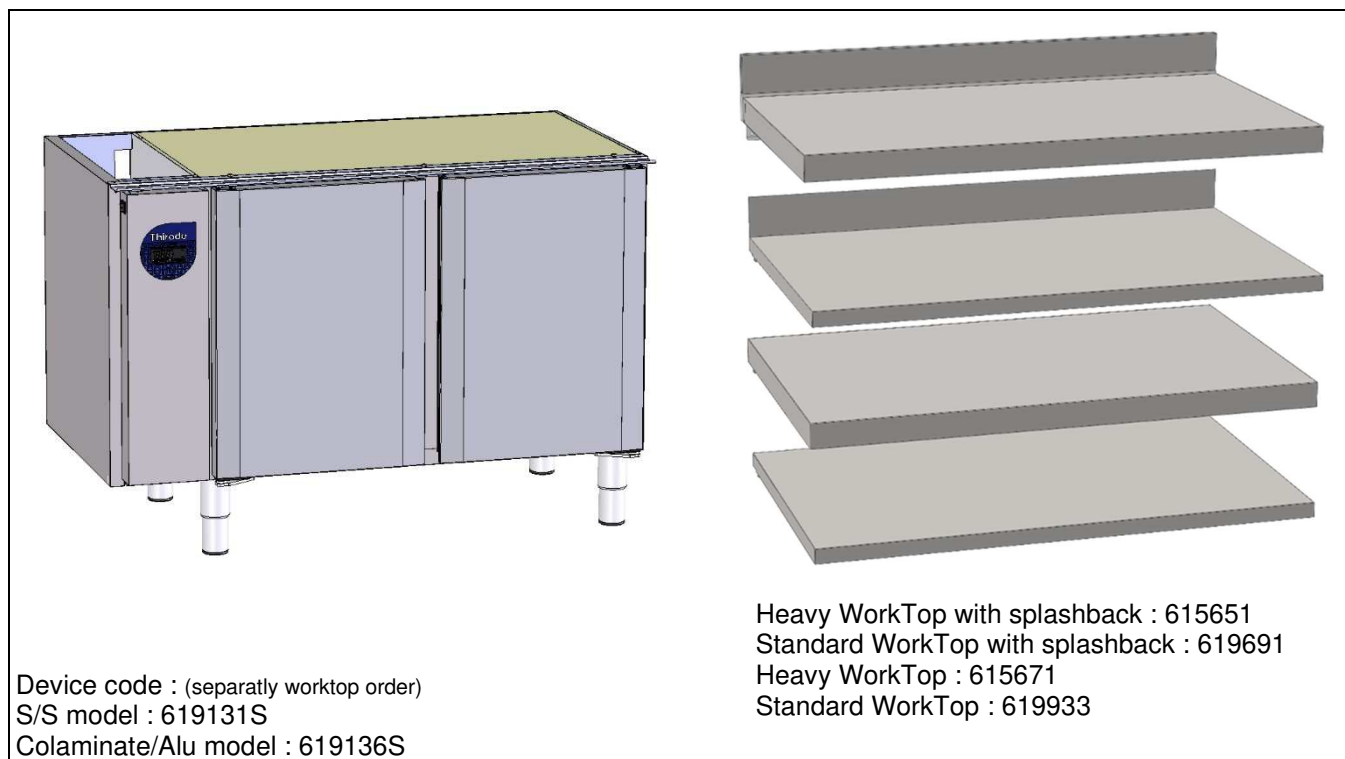


High Temp GN 1/1 - Depth 700

Remote 2 doors model



- * The **high temp** (0° à +12°C) refrigerated counter is designed to stock foodstuffs for an ambient temperature of 43°C. It works with R290 fluid.
- * Capacity of **266 liters**. Delivered with 2 trayslide and 1 S/S shelf GN1/1 per door. The counter can fitted 8 shelves or bac (55mm), step 60mm.
- * Regulation by electronic display, on/off switch, power indicator light and high and low temperature alarm, visual and audible.
- * Automatic desfrost and vaporized defrost water by heater.
- * 304 S/S or aluminium Inner shell.
- * 304 S/S or colaminate external 3 faces. Anti corrosion galvanized unit support, external back and bottom.
- * Fungicidal magnetic door gasket. Spring loaded hinges for automatic door closing with 90° dwell.
- * S/S legs with adjustment for leveling (height 195 +25mm/-45mm).
- * Cataphoresis treated evaporator.
- * Bi-directional ventilation for temperature uniformity in the enclosure (Delta T °: <2 ° K).

OPTIONS et ACCESSORIES

- Dessus mural renforcé
- Dessus mural standard
- Dessus central reforcé
- Dessus central standard
- Serrures/porte
- USB (fourni avec logiciel de traitement)
- Fond rayonné (Inox 304 ou aluminium)
- 2 tiroirs 1/2
- 3 tiroirs 1/3
- Rappel automatique de fermeture avec amortisseur pour bloc tiroirs 1/2
- Rappel automatique de fermeture avec amortisseur pour bloc tiroirs 1/3

- Roulettes
- Habillage arrière inox

Accessoires :


- Clayette inox GN 1/1
- Glissières de clayette supplémentaire

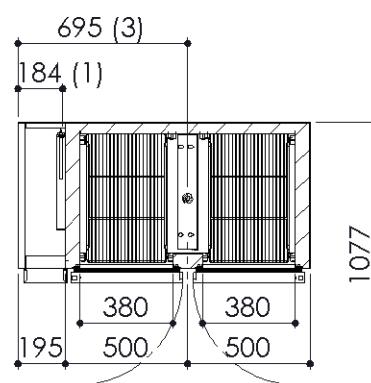
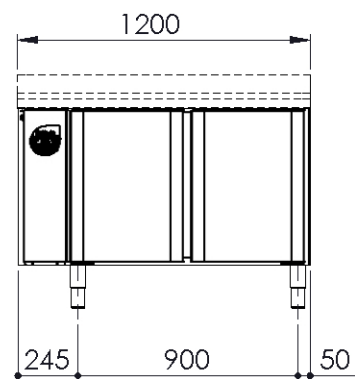
Other options and accessories (on request): Base for masonry plinth, technical compartment reversal, composition strip kit for drawer bin or castor kit.

COUNTER

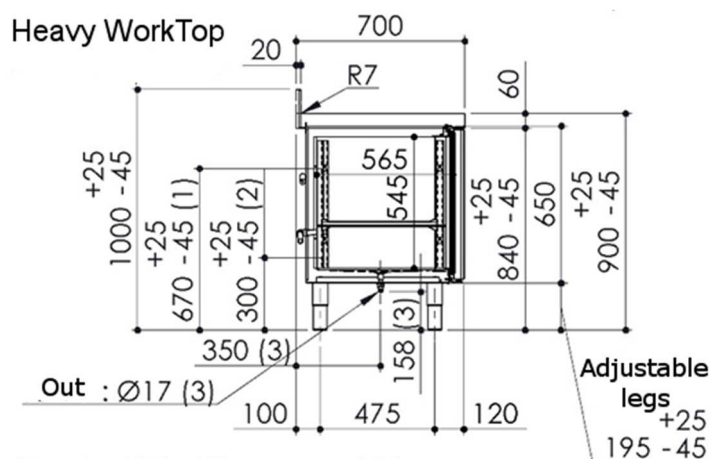
High temp model 2 doors remote

Technical characteristics

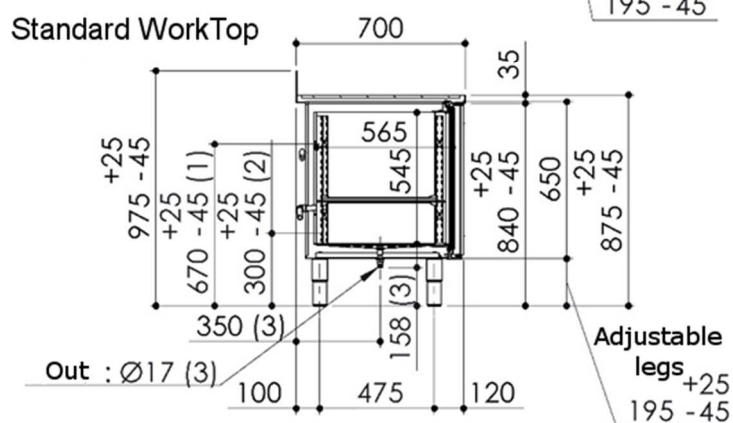
Dimensions (mm)		Nominal height (+25/-45)			Width	Dep.
		Heavy WorkTop	Standard WorkTo	Without WorkTop		
	External	900	875	845	1200	700
	Inner	545			380/door	565
Weigh (Kg)						
	Gross	110				
Electricity						
	Voltage	230V 1~				
	Frequency	50 Hz				
	Protection	aM 2 A				
	Maximum power	190 W				
Refrigerated system						
	Refrigerating power	425 W à -10/+45°C				
	Compressor type	/				
	Evaporator type	Ventilated				
	Fluid	R134a				
	Acoustic pressure	/				
	Heat release	/				
	Gas expansion	Expansion valve				
	Condensation	/				
Capacities						
	Gross volume (L)	266				
	Shelves	GN 1/1 325x530 (1/door)				
	Max. level number	8 per door, step 60mm				
Temperatures						
	Max. ambient	+43°C				
	Climate class	/				
	Temperature rang	-2/+12°C				
	Energetic class	/				
Construction						
	Type	Monoshell				
	External	3 faces 304 S/S or colam., external galva. sheet back and bottom				
	Inner	304 S/S or aluminium				
	Insulation	Polyurethane th.60mm				
Standard						
		Safety : EN 60 335-1 Hygiene : NF EN 1672-2				



Heavy WorkTop



Standard WorkTop



- (1) : Electric connexion
- (2) : Defrost water out
- (3) : Drain option

This document is not contractual n° 6TE657450-1120 - THIRODE reserves the right to improve or modify its products without notice

Thirote

Rue des Frères Lumière - Z.I. Mity Compans - 77292 MITRY MORY cedex
Tél.01 64 67 61 00 - Fax.01.64.67.61.01